



Australian and New Zealand IODP Consortium

ANZIC Bulletin #74

February 2019



As part of celebrating International Women and Girls in Science Day last week we are featuring a pioneering woman in science. Marine biologist and explorer, Sylvia Earle. Illustration of by Rachel Janotofsky.

WELCOME



Welcome **Kelly Kenney** as the new **ANZIC** administrator. Kelly has relocated back to Canberra with her family from sunny Sydney. She will have to adjust to our colder climate but she is already adjusting to everything IODP. Kelly has a breadth of financial and administrative experience having worked for many years as a senior administrator for an NGO. We look forward to Kelly working with us.



Special Call for Paleontologist

(shore-based nannofossil specialist)

Dear ANZIC members,

Special call for paleontologist (shore-based nannofossil specialist)

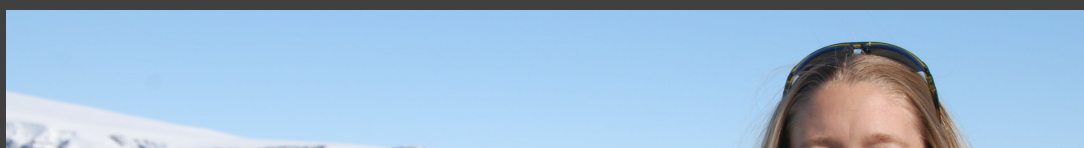
For contingency operations of **IODP Expedition 358**, we would like to call a paleontologist who has a background of late Miocene to Pleistocene calcareous nannofossils.

We welcome a person who can immediately process the samples as a shore-based scientist. Samples for paleontology will be collected from *Chikyu* during **middle-late March 2018**.

During the contingency operation on March 2018, we plan to drill Site NT1-03C at the toe of frontal accretionary prism and Site NT1-01B at the Kumano Forearc Basin, both in the Nankai Trough. For Site NT1-03C, middle Pleistocene to modern slope sediments, early to middle Pleistocene trench-fill sediments, and late Miocene to Pliocene hemipelagic sediments are expected to comprise the hanging wall of the frontal thrust, whereas late Miocene to Pliocene trench-fill sediments are expected to underthrust. For Site NT1-01B, Pliocene to Pleistocene forearc basin sediments as well as underlying late Miocene (?) accretionary prism sediments are expected.

If you are interested please contact Sean Toczko sean@jamstec.go.jp or iodp.administrator@anu.edu.au

Christina Riesselman: Unlocking the secrets of the deep





Dr Christina Riesselman is a leading geologist piecing together a climate change jigsaw with sediment extracted from under seabed. Based at Otago University's Geology and Marine Science departments, Christina says her work gives her "an amazing magnifying glass into the past" and can help us predict future climate possibilities. Christina won the 2015 L'Oréal foundation UNESCO For Women In Science Australia & New Zealand Fellowship, has gathered information about past periods of global warming and cooling on the ANDRILL programme and is one of the few Kiwis to work on research vessel the *Joides Resolution*.

Listen [here](#) for her interview with Kathryn Ryan on Radio New Zealand.



CALL TO SAIL!

Expedition 387: [Amazon Continental Margin](#)

- JR Science Operator
- Expedition dates: April 26 - June 26, 2020
- [Exp 387 Call for Applications](#)

Apply by March 1, 2019

Expedition 388: [Equatorial Atlantic Gateway](#)

- JR Science Operator
- Expedition dates: June 26 - August 26
- [Exp 388 Call for Applications](#)

Apply by April 1, 2019

EXPEDITION UPDATES

Expedition 358 - NanTroSEIZE Plate Boundary Deep Riser 4 *By Toby Colson* [Read here](#)
For more expedition information visit [Jamstec -NanTroSEIZE](#)



Expedition 379 - Amundsen Sea West Antarctic Ice Sheet History. Daily scientific reports [here](#)

WORKSHOP REPORTS

- The IODP/ICDP New Caledonian Peridotite Amphibious Drilling Workshop (NCDP) 22-24 Jan,

Read workshop report by Derya Güler, Lecturer in Earth Sciences School of Earth and Environmental Sciences, UQ, Australia. Report [HERE](#)



- Completing the Australian-Antarctic transect: Ocean drilling to reveal the nature of Gondwana and the development of the Antarctic Circumpolar Current 21-26 Jan, 2019 - IODP pre-proposal writing workshop in Hobart. Report [HERE](#)

WORKSHOPS & EVENTS

Our Ocean Planet Workshop is 2 months away. Please register your interest and be involved in defining IODP's future research goals. *Note: Some travel assistance is available for those travelling from interstate.*

Join us in
developing the new
**IODP Strategic Plan
2024 – 2034**

OCEAN PLANET

14 – 16 April 2019
ANU Canberra, Australia

Please register your interest to have your say in defining the future scientific research goals of the IODP



Australian and New Zealand
IODP Consortium

FOR MORE INFORMATION AND TO REGISTER YOUR INTEREST



ANZIC PROGRAM SCIENTIST ROADSHOW

Australia and NZ Institutional Tours and Presentations - February/March, 2019

ANZIC's Program Scientist Assoc. Prof. Leanne Armand is on tour.

Assoc. Prof Armand will be presenting an overview of ANZIC and IODP and information on ANZIC's upco OCEAN PLANT WORKSHOP - Developing the New IODP Strategic Plan 2024-2034, to be held in Canbe 16 April.

This is a unique opportunity to become aware of ANZIC and IODP and the current and future opportunities available to the Biogeo and Microbial communities.

Roadshow #1

Mon 18th Feb **Brisbane** UQ

Tues 19th Feb **Brisbane/Townsville** QUT

Thurs 21st Feb **Sydney** MQ & UNSW

Fri 22nd Feb **Sydney** USyd

Mon 25th Feb **Wellington**, NZ. Vic Uni

Roadshow #2

Tues 12th March **Melbourne** Uni Melb

Wed 13th March **Melbourne**

Thurs 14th March **Perth** UWA

Fri 15th March **Perth**

Monday 18th **Adelaide** UA

For more information please contact iodp.administrator@anu.edu.au



International Palaeoceanography Conference (ICP13) 2-6 Sept 2019, Sydney.

NOTE EARLY BIRD REGISTRATION CLOSES SOON -28th February

Anatomy of a Long-Lived Oceanic Arc: Geology, Geophysics and Geochemistry of the Izu-Bonin-Mariana Arc System and Analogs

Oct 27 – Nov 2, 2019; Izu Peninsula, Japan

Click [HERE](#) for more information and to apply.
Deadline to Apply: May 1, 2019



3rd International Congress on Stratigraphy
2-5 July 2019 in Milano, Italy

March 10th - deadline for abstract submissions

May 15th - deadline for early registration

SURVEYS

NMSC PROJECT SURVEY

James Cook University an online survey to assess the compatibility between Australia's university training and the needs of non-university employers in the country's marine/aquatic/maritime sector. Wanting to hear from:

- **Senior representatives of employers** to understand their professional staff needs
- **Masters/PhD students and recent graduates** (< 5 yrs) from Australian universities who are working (or seek to work) in Australia's marine/aquatic/maritime sector

Seeking perspectives from people across a wide range of disciplines and employment sectors.

To participate in the survey:

[Employers](#)

[Masters/PhD students](#)

[Masters/PhD graduates](#)

[See here for additional information.](#)

Thank you for supporting research that will contribute to the

development of university training that better meets the needs of employers and improves employment outcomes for graduates.

FOLLOW US ON FACEBOOK & INSTAGRAM



Our mailing address is:

www.iodp.org.au

iodp.administrator@anu.edu.au

ANZIC - IODP, Office L5, Jaeger Building 4, 142 Mills Rd, Acton ACT Australia 2601

Want to change how you receive these emails?

You can [update your preferences](#) or [unsubscribe from this list](#).

This email was sent to Virginia.Toy@otago.ac.nz

[why did I get this?](#) [unsubscribe from this list](#) [update subscription preferences](#)

Australian and New Zealand IODP Consortium · Australian National University · RSES, Mills RD · Canberra, Act 2601 · Australia

